

Code: 14414-v Amyloid β -Protein (Human, 37-43) Antiserum

Lot: 993-530722 (Rabbit)

Amyloid β -Protein (1-43) Specific Antiserum

Immunogen: Amyloid β -Protein (Human, 37-43)-KLH
(KLH: Keyhole Limpet Hemocyanin)

This vial contains 50 μ l of the titled compound, which has been lyophilized as an amorphous powder from 0.001 M Phosphate Buffer (pH 7.0).

Storage: After reconstitution with buffer, the solution can be kept at 4°C with (soln.) a preservative for continuous use. For extended storage, it should be frozen at -20°C.

Storage: The undissolved antiserum is stable at room temperature for 1 month. (powder) For long time storage, it should be stored at -20°C.

ELISA

Coating Peptide	Reactivity
Amyloid β -Protein (Human, 1-43)*	+
Amyloid β -Protein (Human, 1-42)*	-
Amyloid β -Protein (Human, 1-40)*	-
Amyloid β -Protein (Human, 1-16)*	-

*0.1 μ g/well

(+): Positive Color Reaction (Right Figure)

(-): Negative Color Reaction in 60 min

Microplate:

96-Well / IWAKI ELISA PLATE

Blocking: Casein

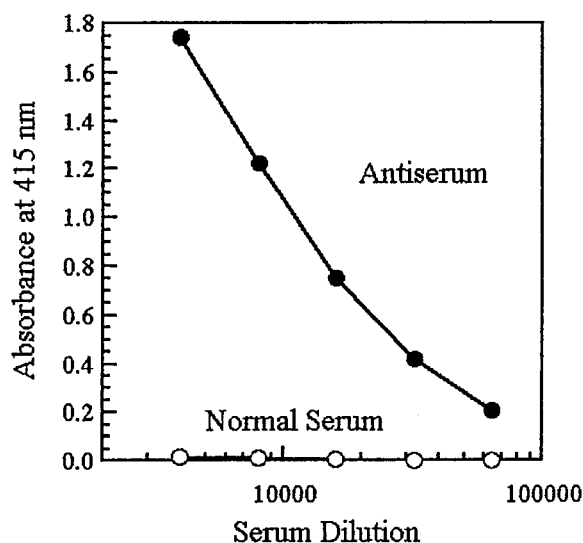
Detection:

Horserraddish Peroxidase-Labeled Anti-Rabbit Ig G (H+L) Antibody

Substrate: ABTS [2,2'-Azino-bis(3-ethylbenzothiazoline-6-sulfonate)]

Enzyme Reaction: Room Temperature, 15 min

Amyloid β -Protein (Human, 37-43) Dilution Curve



While our antisera are characterized using enzyme immunoassay, these may be used for RIA or other non-isotopic immunoassay systems.

Caution: This antiserum is sold for research purposes only and not for use in humans.