

**Code: 14359-v Amyloid  $\beta$ -Protein (Human, 1-16) Antiserum**

Lot: 981-481021 (Rabbit)

Amyloid  $\beta$ -Protein N-Terminal Specific AntiserumImmunogen: Amyloid  $\beta$ -Protein (Human, 1-16)-KLH  
(KLH: Keyhole Limpet Hemocyanin)

This vial contains 50  $\mu$ l of the titled compound, which has been lyophilized as an amorphous powder from 0.001 M Phosphate Buffer (pH7.0).

**Storage:** After reconstitution with buffer, the solution can be kept at 4 °C with (soln.) a preservative for continuous use. For extended storage, it should be frozen at -20 °C.

**Storage:** The undissolved antiserum is stable at room temperature for 1 month. (powder) For long time storage, it should be stored at -20 °C.

**ELISA**

Coating Peptide	Reactivity
Amyloid $\beta$ -Protein (Human, 1-16)*	+
Amyloid $\beta$ -Protein (Human, 1-40)**	+
Amyloid $\beta$ -Protein (Human, 1-16)	+

\* Amyloid  $\beta$ -Protein (Human, 1-16) conjugated with chicken egg albumin, 1  $\mu$ g/well

\*\* 0.5  $\mu$ g/well

Microplate:

96-Well / H-type / Sumitomo Bakerite Co.Ltd

Blocking: Casein

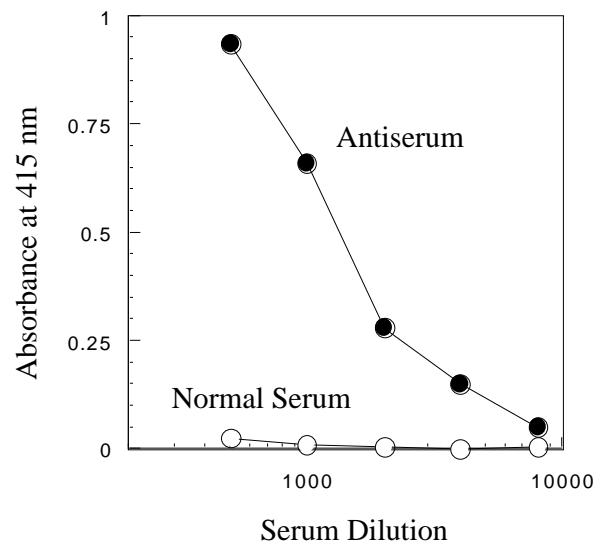
Detection:

Horserradish Peroxidase-Labeled Anti-Rabbit

Ig G (H+L) Antibody

Substrate: ABTS [2,2'-Azino-bis(3-ethylbenzothiazoline-6-sulfonate)]

Enzyme Reaction: Room Temperature, 20 min

**Amyloid  $\beta$ -Protein (Human, 1-16) Antiserum Dilution Curve**

*While our antisera are characterized using enzyme immunoassay, these may be used for RIA or other non-isotopic immunoassay systems.*

**Caution: This antiserum is sold for research purposes only and not for use in humans.**