

Code: 14357-v Amyloid β -Protein (Human, 37-42) Antiserum

Lot: 982-481020 (Rabbit)

Amyloid β -Protein (1-42) Specific Antiserum

Immunogen: Amyloid β -Protein (Human, 37-42)-KLH
 (KLH: Keyhole Limpet Hemocyanin)

This vial contains 50 μ l of the titled compound, which has been lyophilized as an amorphous powder from 0.001 M Phosphate Buffer (pH7.0).

Storage: After reconstitution with buffer, the solution can be kept at 4 $^{\circ}$ C with a preservative for continuous use. For extended storage, it should be frozen at -20 $^{\circ}$ C.

Storage: The undissolved antiserum is stable at room temperature for 1 month. (powder) For long time storage, it should be stored at -20 $^{\circ}$ C.

ELISA

Coating Peptide	Reactivity
Amyloid β -Protein (Human, 1-42)*	+
Amyloid β -Protein (Human, 1-40)*	-
Amyloid β -Protein (Human, 1-16)**	-

* 0.5 μ g/well

** Amyloid β -Protein (Human, 1-16) conjugated with chicken egg albumin, 1 μ g/well

Microplate:

96-Well / H-type / Sumitomo Bakerite Co.Ltd

Blocking: Casein

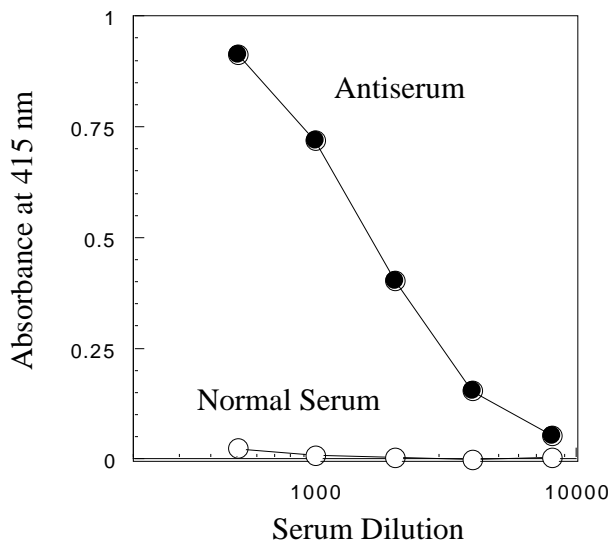
Detection:

Horserraddish Peroxidase-Labeled Anti-Rabbit Ig G (H+L) Antibody

Substrate: ABTS [2,2'-Azino-bis(3-ethylbenzothiazoline-6-sulfonate)]

Enzyme Reaction: Room Temperature, 20 min

Amyloid β -Protein (Human, 37-42) Antiserum Dilution Curve



While our antisera are characterized using enzyme immunoassay, these may be used for RIA or other non-isotopic immunoassay systems.

Caution: This antiserum is sold for research purposes only and not for use in humans.