

**Code: 14356-v Amyloid  $\beta$ -Protein (Human, 34-40) Antiserum**

Lot: 972-481019 (Rabbit)

**Amyloid  $\beta$ -Protein (1-40) Specific Antiserum****Immunogen: Amyloid  $\beta$ -Protein (Human, 34-40)-KLH**  
(KLH: Keyhole Limpet Hemocyanin)

This vial contains 50  $\mu$ l of the title compound, which has been lyophilized as an amorphous powder from 0.001 M Phosphate Buffer (pH7.0).

**Storage:** After reconstitution with your buffer, the solution can be kept at 4°C (soln.) with a preservative for continuous use. For extended storage, it should be frozen at -20°C.

**Storage:** The undissolved antiserum is stable at room temperature for 1 month. (powder) For long time storage, it should be stored at -20°C.

## ELISA

Coating Peptide	Reactivity
Amyloid $\beta$ -Protein (Human, 1-40)*	+
Amyloid $\beta$ -Protein (Human, 1-42)*	-
Amyloid $\beta$ -Protein (Human, 1-16)**	-

\* 0.5  $\mu$ g/well\*\* Amyloid  $\beta$ -Protein (Human, 1-16) conjugated with chicken egg albumin, 1  $\mu$ g/well

(+) : Positive Color Reaction (Right Figure)

(-) : Negative Color Reaction in 60 min

Microplate:

96-Well / H-type / Sumitomo Bakerite Co.Ltd

Blocking: Casein

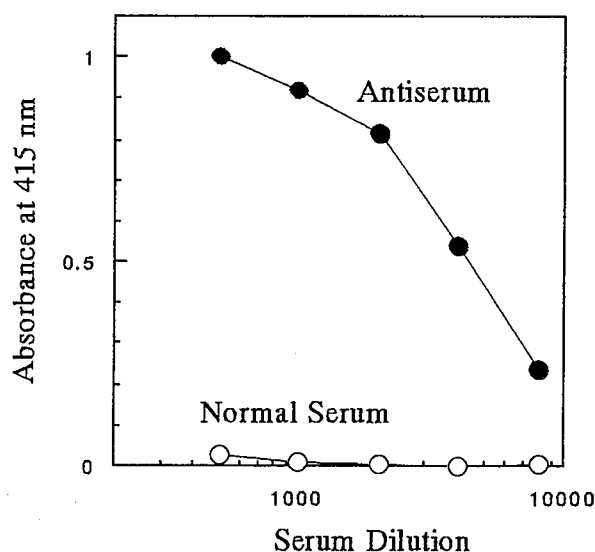
Detection:

Horseradish Peroxidase-Labeled Anti-Rabbit Ig G (H+L) Antibody

Substrate: ABTS [2,2'-Azino-bis(3-ethylbenzthiazoline-6-sulfonate)]

Enzyme Reaction: Room Temperature, 20 min

## Amyloid $\beta$ -Protein (Human, 34-40) Antiserum Dilution Curve



*While our antisera are characterized using ELISA, these may be used for RIA or other immunoassays.*

**Caution: This antiserum is sold for research purposes only and not for use in humans.**