

**Code: 14319-v Midkine (Human, 1-59) Antiserum**

Lot: 981-480521 (Rabbit)

Immunogen: Midkine (Human, 1-59)-TG  
(TG: Bovine Thyroglobulin)

This vial contains 50  $\mu$ l of the titled compound, which has been lyophilized as an amorphous powder from 0.001 M Phosphate Buffer (pH7.0).

**Storage:** After reconstitution with buffer, the solution can be kept at 4 °C with a preservative for continuous use. For extended storage, it should be frozen at -20 °C.

**Storage:** The undissolved antiserum is stable at room temperature for 1 month.  
(powder) For long time storage, it should be stored at -20 °C.

**ELISA**

Coating Peptide*	Reactivity
Midkine (Human)	+
Midkine (Human, 1-59)	+
Midkine (Human, 60-121)	-
Pleiotrophin (Human)	-

\* 100  $\mu$ l of  $0.02 \times 10^{-9}$  M Solution/Well  
(+): Positive Color Reaction (Right Figure)  
(-): Negative Color Reaction in 60 min

Microplate:

96-Well / Carbo-type / Sumitomo Bakerite Co.Ltd

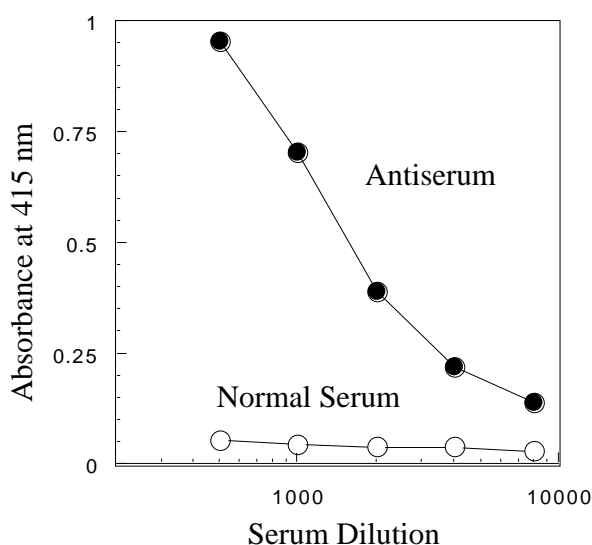
Blocking: Casein

Detection:

Horseradish Peroxidase-Labeled Anti-Rabbit  
Ig G (H+L) Antibody

Substrate: ABTS [2,2'-Azino-bis(3-ethylbenzthiazoline-6-sulfonate)]

Enzyme Reaction: Room Temperature, 20 min

**Midkine (Human, 1-59) Antiserum Dilution Curve**

*While our antisera are characterized using enzyme immunoassay, these may be used for RIA or other non-isotopic immunoassay systems.*

**Caution:** This antiserum is sold for research purposes only and not for use in humans.