

Code: 14164-v GRP (Human) AntiserumLot: 873-550423 Gastrin Releasing Peptide (Human) Antiserum
(Rabbit)Immunogen: GRP (Human)-TG
(TG: Bovine Thyroglobulin)This vial contains 50 μ l of the titled compound, which has been lyophilized as an amorphous powder from 0.001 M Phosphate Buffer (pH 7.0).**Storage:** After reconstitution with buffer, the solution can be kept at 4°C with (soln.) a preservative for continuous use. For extended storage, it should be frozen at -20°C.**Storage:** The undissolved antiserum is stable at room temperature for 1 month. (powder) For long time storage, it should be stored at -20°C.**ELISA**

Coating Peptide	Reactivity
GRP (Human)*	+++
Bombesin*	+
Neuromedin U*	-
Neuromedin B*	-
Neuromedin C*	-

*0.1 μ g/well

(+) : Positive Color Reaction (Right Figure)

(-) : Negative Color Reaction in 60 min.

Microplate:

96-Well / IWAKI ELISA PLATE

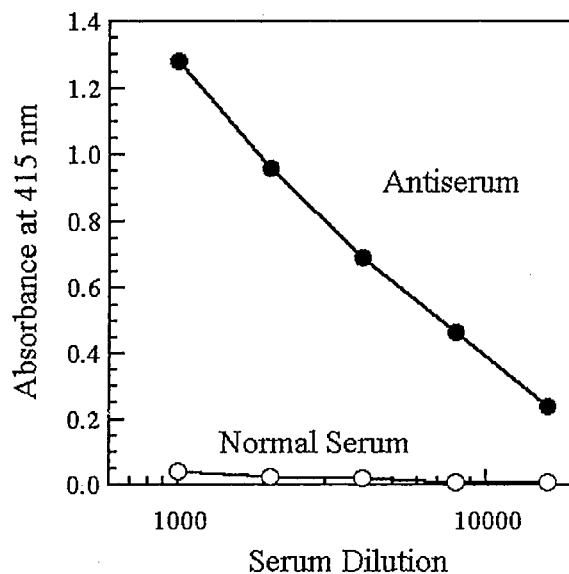
Blocking: Casein

Detection:

Horseradish Peroxidase-Labeled Anti-Rabbit
Ig G (H+L) Antibody

Substrate: ABTS [2,2'-Azino-bis(3-ethylbenzothiazoline-6-sulfonate)]

Enzyme Reaction: Room Temperature, 15 min

GRP (Human) Antiserum
Dilution Curve

While our antisera are characterized using enzyme immunoassay, these may be used for RIA or other non-isotopic immunoassay systems.

Caution: This antiserum is sold for research purposes only and not for use in humans.